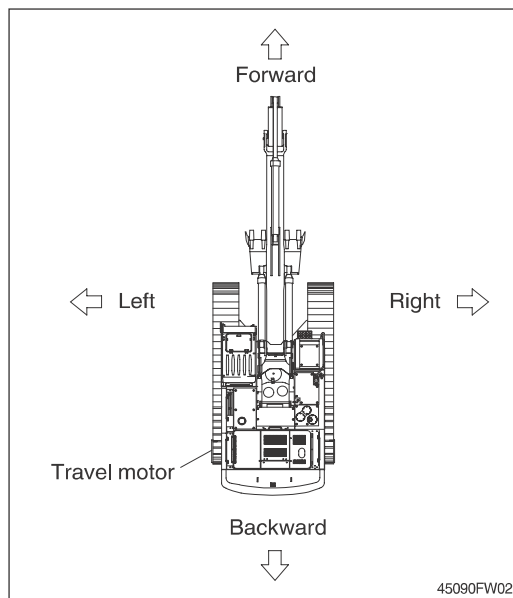


1. DIRECTION

The direction of this manual indicates forward, backward, right and left on the standard of operator when the travel motor is in the rear and machine is on the traveling direction.

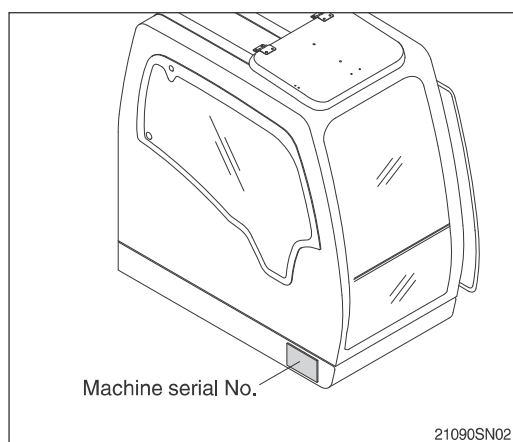


2. SERIAL NUMBER

Give the following information when you order parts or the machine is out of order:

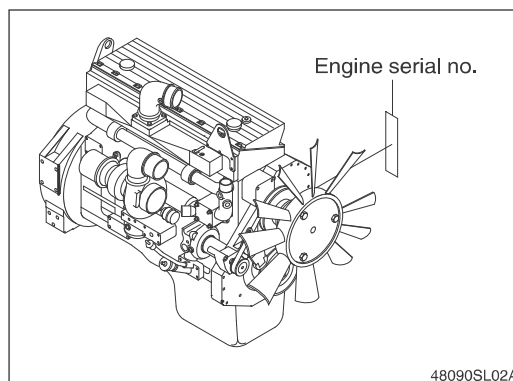
1) MACHINE SERIAL NUMBER

The numbers are located below the right window of the operator's cab.



2) ENGINE SERIAL NUMBER

The numbers are located on the engine name plate.



3. INTENDED USE

This machine is designed to be used mainly for the following work.

- Digging work
- Loading work
- Smoothing work
- Ditching work
- Demolition work (R520LC-9 DM only)

※ Please refer to Efficient working method on page 4-17 for more details.

4. SYMBOLS

▲ Important safety hint.

△ Indicates matters which can cause the great loss on the machine or the surroundings.

※ Indicates the useful information for operator.